

Thirlmere Gardens

• • HA6 2GA
PCM: £1,300 PCM



coopers
est 1986

Bright and spacious one bedroom first floor maisonette convenient for Mount Vernon Hospital and about 20 minute walking distance to Northwood High Street and Tube with transport links to central London via the Metropolitan line. Bright lounge, double bedroom with fitted wardrobe, modern fitted kitchen with white goods, modern bathroom with electric shower, ample storage cupboards and loft space, gas central heating, double glazed windows and parking.

First Floor Maisonette

Unfurnished

Parking

20 Minutes Walk To Northwood High Street

Metropolitan Line

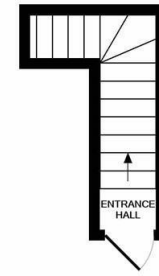
Loft Space

Council Tax Band C

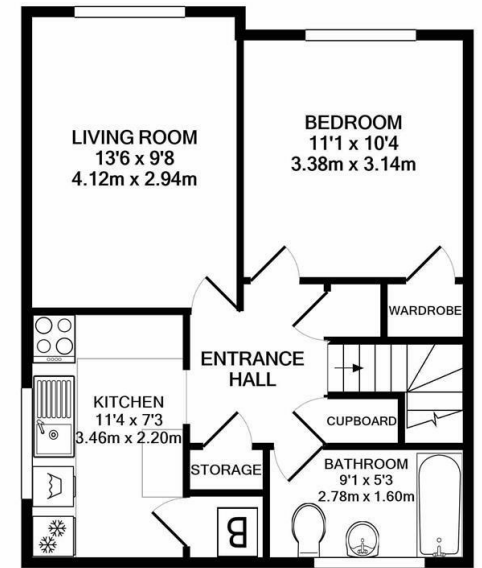
524 sqft

Available Date

11th June 2025



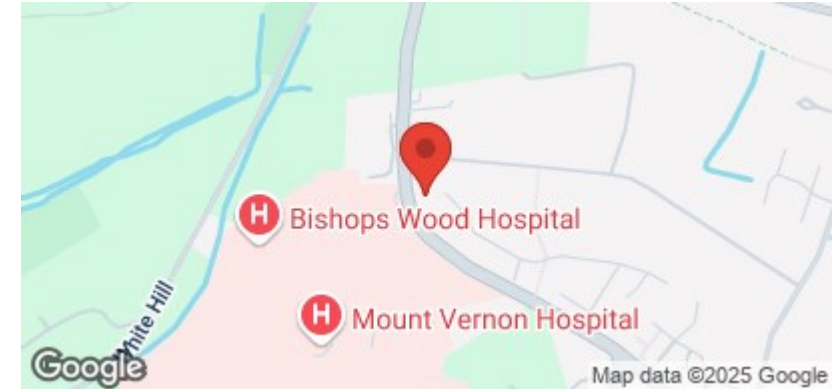
ENTRANCE FLOOR
APPROX. FLOOR
AREA 38 SQ.FT.
(3.6 SQ.M.)



GROUND FLOOR
APPROX. FLOOR
AREA 485 SQ.FT.
(45.1 SQ.M.)

TOTAL APPROX. FLOOR AREA 524 SQ.FT. (48.6 SQ.M.)

Whilst every attempt has been made to ensure the accuracy of the floor plan contained here, measurements of doors, windows, rooms and any other items are approximate and no responsibility is taken for any error, omission, or mis-statement. This plan is for illustrative purposes only and should be used as such by any prospective purchaser. The services, systems and appliances shown have not been tested and no guarantee as to their operability or efficiency can be given
Made with Metropix ©2022



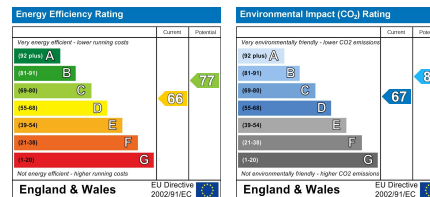
coopers
est 1986

01895 625 625

126-128 High Street, Ruislip,
Middlesex, HA4 8LL

rl@coopersresidential.co.uk

CoopersResidential.co.uk



Important Notice: These particulars, whilst believed to be accurate are set out as a general outline only for guidance and do not constitute any part of an offer or contract. Intending purchasers should not rely on them as statements or representation of fact, but must satisfy themselves by inspection or otherwise has the authority to make or give any representation or warranty in respect of the property.